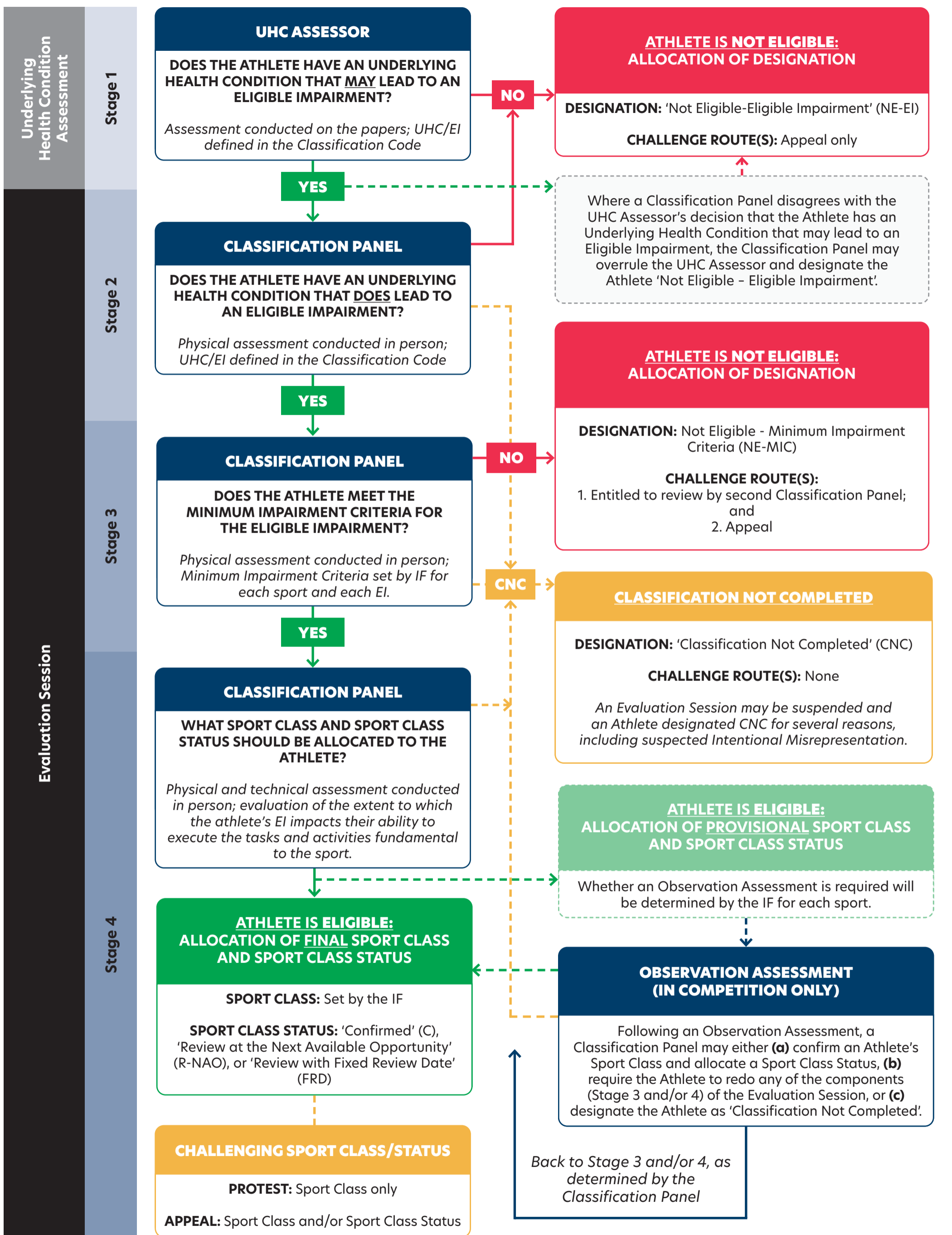


Classification Flowchart

Version October 2023 | Consultation Phase 3



MEDICAL REVIEW

A change in the nature or degree of an Athlete's impairment may mean that a review is needed either to: (i) reassess an Athlete previously designated as Not Eligible, or (ii) ensure the Sport Class allocated to an Athlete is correct. Where a Medical Review is required, a new Underlying Health Condition Assessment and/or Evaluation Session (including, if required, an Eligible Impairment Assessment) will be conducted.